



Gulf Extrusions Expands Presence with New Kiosk at Arabian Center.

Gulf Extrusions supplied high-quality aluminum 'Next System' for farmhouse project in Lahore - Pakistan.

Smart Clinic Visits - Valuable On Site Medical Services Provided to Gulfex Employees.

Gulf Extrusions welcomes Ramadan with Employee-Focused Initiatives.

Gulf Extrusions L.L.C. | A Subsidiary of Saif Al Ghurair Group



Gulf Extrusions L.L.C., P.O.Box 5598, Dubai, United Arab Emirates

Tel: 00971 4 884 6146

Fax: 00971 4 884 6830

www.gulfex.com

Table of Contents

- 3 Editorial.
- 4 Gulf Extrusions Expands Presence with New Kiosk at Arabian Center.
- 5 Gulf Extrusions supplied high-quality aluminum 'Next System' for farmhouse project in Lahore - Pakistan.
- 6 THE NEXT.
- 7 Smart Clinic Visits - Valuable On Site Medical Services Provided to Gulfex Employees.
- 8 Gulf Extrusions welcomes Ramadan with Employee-Focused Initiatives.



RAMADAN AT
GULFEX

Gulf Extrusions Magazine

February 2025

Issue 31

Editorial

Dear Readers,

As we move into February, Gulf Extrusions continues to focus on growth, innovation, international reach and the well-being of our employees.

What deserves starting this edition is the opening of our new kiosk at Arabian Center, Dubai. The kiosk serves as a dedicated platform where locals, architects, project managers, and consultants can explore our high-quality aluminum systems and discuss tailored solutions for their projects. It represents an important step in enhancing our visibility and accessibility in the market.

Our international reach is also growing with the Humayun Aziz Farm House project in Lahore, Pakistan. This project showcases our expertise in providing durable, high-quality aluminum systems tailored to meet the specific needs of our clients. It's a perfect example of our ability to deliver exceptional solutions across various sectors.

Additionally, this issue introduces "THE NEXT", a revolutionary system in our portfolio, combining exceptional design with enhanced functionality for various architectural integration.

Employee well-being remains a top priority, and our partnership with Smart Clinic has reached its 16th visit. On January 9, 2025, our employees had access to on-site medical services from 8:00 AM to 3:00 PM. This initiative supports our ongoing commitment to the health and well-being of our team.

As Ramadan approaches, we are introducing initiatives to support our employees during this special time. These efforts include providing Futoor and Suhoor meals, along with adjusting work hours to ensure a balanced and supportive work environment throughout the holy month.

At Gulf Extrusions, we continue to focus on innovation, employee care, and expanding our presence in key markets.

We hope you find this issue insightful and inspiring, as we continue to strive for excellence in everything we do.

Happy reading!



GULF EXTRUSIONS MAGAZINE
February 2025 | Issue 31

For suggestions and contributions, please write to Hassan.Sukkariah@gulfex.com

Gulf Extrusions Expands Presence with New Kiosk at Arabian Center



The kiosk serves as a platform for showcasing the company's expertise and engaging directly with stakeholders.

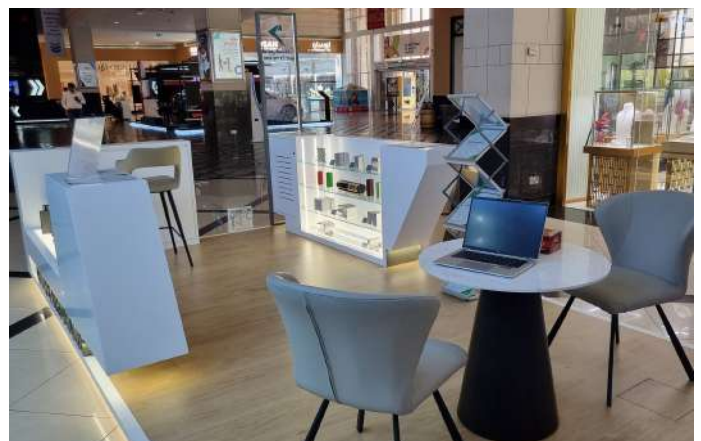
Gulf Extrusions has opened a kiosk at Arabian Center in Dubai, showcasing its high-quality aluminum profiles and systems.

The kiosk allows project managers, consultants, architects, and buyers to explore product samples and collaborate with the company's technical and design teams to find the best solutions for their projects.

Commenting on the opening, Gulf Extrusions CEO Omar Shegem emphasized that the kiosk is part of the company's strategic plan to enhance visibility and strengthen its brand presence in UAE and other key markets.

CEO Omar Shegem highlighted the kiosk's role in fostering closer collaboration with industry professionals, ensuring tailored solutions for diverse project needs.

This initiative reflects Gulf Extrusions' commitment to delivering premium aluminum solutions while strengthening its presence in local market.



Gulf Extrusions supplied high-quality aluminum 'NEXT System' for farmhouse project in Lahore - Pakistan.



Unparalleled Solutions: Gulf Extrusions' Aluminium Empowers Projects in Pakistan.

Gulf Extrusions delivers modern aluminum solutions for one of our projects in Pakistan, a wonderful farmhouse designed with innovation and functionality.

Farmhouse in Lahore - Pakistan.

Project	► Humayun Aziz Farmhouse.
Architectural Designer	► Rizwan Sadiq Architects.
Fabricator	► Defense Aluminum.
System Used	► NEXT System (Gulf Extrusions).
Windows Height	► 3.5 M.
City	► Lahore.
Country	► Pakistan.

The project featured our modern innovation, Gulf Extrusions' NEXT System.

This system combines energy efficiency with exceptional aesthetics, providing sustainable and visually pleasing solutions for residential and commercial buildings.

At Gulf Extrusions, our commitment to excellence drives us to consistently deliver outstanding results in every project.



From modern Aluminum system that enhance its beauty to the peaceful surroundings, this farmhouse in Pakistan has a unique design that makes a lasting impression.



THE NEXT

Thermal break, multi track sliding system designed for heavy duty and wide glazing areas, offering the ultimate cost effective solution in a fashionable design to users.



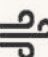
The special crimped polyamides thermal breaks ensures high thermal isolation, anticipating the fact of high durability, saving on power bills and a convenient application to user.

System Specifications

Sash Height	3.5 m
Sash Width	2.0 m
Max Sash Weight	300 kg
Glazing	24-40 mm
Max No. of Tracks	5 tracks
Thermal Break	Polyamides



- ✓ **Multi-track up to 5 tracks.**
- ✓ **Integrated system supplied with premium hardware and accessories.**

 Air Leakage (ASTM E 283/E 283M-19)	300 Pa
 Static Water Penetration (ASTM E 331-00 (2016)) Dynamic Water Penetration (AAMA 501.1-17)	600 Pa 600 Pa
 100% Design Wind Pressure (ASTM E 330/E330M-14) 150% Design Wind Pressure (ASTM E 331/E330M-14)	1500 Pa 2250 Pa

Smart Clinic Visits – Valuable On Site Medical Services Provided to Gulfex Employees



From routine check-ups to expert medical advice, Smart Clinic's presence ensures quick and convenient access to healthcare right here at Gulfex.

As part of our commitment to employee health & well-being, Gulf Extrusions hosts Smart Clinic visit on 9th January 2025.

Instead of visiting hospitals and clinics, doctors & nurses come directly to our premises. This innovative initiative aims to save valuable time, particularly for individuals requiring chronic medications.

As part of the Smart Clinic campaign, our employees were offered a comprehensive array of complimentary health screenings, encompassing blood pressure and blood sugar level tests, height and weight measurements, assessments for diabetes, hypertension, & hypotension, on-site blood sampling, as well as consultations with doctors and medical professionals.



Gulf Extrusions welcomes Ramadan with Employee-Focused Initiatives.

Providing Support and a Balanced Work Environment During the Holy Month.



As part of its commitment to employee well-being, Gulf Extrusions is providing Futoor and Suhoor meals to employees throughout Ramadan. This initiative reflects the company's dedication to fostering a supportive and inclusive workplace, ensuring employees can observe the holy month with ease and comfort.

In compliance with UAE labor laws, daily working hours have been reduced by two hours, allowing employees to maintain a healthy balance between work and spiritual practices. The Ramadan timing schedule has been announced and shared with all employees to ensure smooth coordination across operations.

By implementing these measures, Gulf Extrusions reaffirms its commitment to both operational efficiency and employee care.

Additionally, Gulf Extrusions maintains its tradition of hosting a dedicated Iftar for customers, fostering stronger business relationships, alongside an Iftar gathering for Gulfex employees at a hotel to reinforce team spirit and appreciation. These initiatives reflect our commitment to care, respect, and community engagement.

We extend our wishes to all employees and their families for a blessed and peaceful Ramadan. May Allah accept your prayers, fasting, and good deeds.

Aluminium is already used to make everything from doors and windows to façades and the world's inventors keep finding new ways to use it!



As in pavilions, convention centers and modern buildings, Aluminium is widely used to build large-scale structures with non-standard shapes and customized designs such as residential and commercial towers, shopping malls, hospitals, schools, universities, stadiums, covered pools and other sports facilities.

Aluminium profiles extruded by Gulf Extrusions are used most frequently in architectural sector, being processed into windows, doors, and many more uses.

Got inspired!

Explore Gulfex comprehensive range of architectural services here and find out how we can create something truly exceptional for your project or business.

***What are you waiting for? Call or drop us a line.
Tel: 00971 4 884 6146 - Email: sales@gulfex.com***

GULF EXTRUSIONS

MAGAZINE

ISSUE 31 FEBRUARY 2025



Gulf Extrusions L.L.C. | A Subsidiary of Saif Al Ghurair Group L.L.C.



Gulf Extrusions L.L.C., P.O. Box 5598, Dubai, United Arab Emirates
www.gulfex.com

Tel: 00971 4 884 6146

Fax: 00971 4 884 6830