

# Gulf Extrusions



Magazine

January 2025

Issue 30



Gulf Extrusions Strengthens Ties with GEZE for Future Collaboration

Olivz by Danube: A Landmark Project Showcasing Gulf Extrusions' Aluminum Innovation and Expertise.

Curtain Wall - 50

Advancing Sustainability and Environmental Stewardship: Gulf Extrusions' Commitment to a Greener Future.

GULF EXTRUSIONS L.L.C | A SUBSIDIARY OF SAIF AL GHURAIR GROUP LLC.



GULF EXTRUSIONS CO. LLC, PO BOX 5598, DUBAI, UNITED ARAB EMIRATES  
TEL: 00971 4 884 6146 FAX: 00971 4 884 6830 WWW.GULFEX.COM

# Table of Contents

3 Editorial.

4 Gulf Extrusions Strengthens Ties with GEZE for Future Collaboration.

5 Olivz by Danube: A Landmark Project Showcasing Gulf Extrusions' Aluminum Innovation and Expertise.

7 Curtain Wall-50

8 Gulf extrusions cares about its employees

9 Advancing Sustainability and Environmental Stewardship: Gulf Extrusions' Commitment to a Greener Future.



Curtain Wall-50



Initiative: Recycling of Aluminium Hydroxide Sludge and Powder Waste



EMPLOYEE  
HEALTH AND  
WELLBEING

SUSTAINABILITY  
AND  
ENVIRONMENTAL  
CONSERVATION

**Gulf Extrusions Magazine**  
January 2025 Issue 30

# Editorial

Dear Readers,

As we step into 2025, Gulf Extrusions continues to achieve excellence in every aspect of our work, advancing products and solutions, promoting environmental responsibility, and fostering a thriving workforce.

This month, we highlight our top management's visit to GEZE to strengthen business relations and explore automation advancements in architectural buildings.

Another landmark project, Olivz by Danube, was completed using Gulf Extrusions' high-quality aluminum systems, featuring Curtain Wall 50 and Montana systems for superior appearance, performance, and reliability.

Within this edition, Gulf Extrusions introduces "Curtain Wall 50", a modern advancement in building solutions that blend beautiful aesthetics with unparalleled functionality.

In collaboration with Max Vision, we organized an Eye Health Awareness Campaign on January 16, 2025, ensuring employees prioritize vision care for long-term health.

As part of our commitment to environmental conservation, Gulf Extrusions is actively recycling aluminum hydroxide sludge and powder waste, promoting and reinforcing sustainable manufacturing practices.

Gulf Extrusions' aluminum profiles are integral to civil engineering applications, widely used in ceilings, windows, doors, partitions, stairs, curtain walls, and shopfronts. Our high-quality extrusions continue to support infrastructure projects worldwide.

Gulfex continues to push boundaries, promote sustainable growth, and prioritize employee well-being.

We look forward to another year of excellence and progress.

Enjoy reading!

For suggestions and contributions, please write to [hassan.sukkariah@gulfex.com](mailto:hassan.sukkariah@gulfex.com)



# ***Gulf Extrusions Strengthens Ties with GEZE for Future Collaboration***



From left to right: Toufic Khachan, Operations Director of GEZE ME; Ammar El Taher, Gulf Extrusions Commercial Director; Omar Shegem, Gulf Extrusions CEO; Martin Palmer, Managing Director of GEZE; Sameer Alkhresha, Gulf Extrusions Deputy GM – during a business visit at GEZE ME to strengthen business collaboration and explore future opportunities.

## **High-Level Meeting Explores Mutual Business Expansion and Product Integration.**

A senior delegation from Gulf Extrusions, led by Omar Shegem, CEO, alongside Sameer Alkhresha, Deputy GM, and Ammar El Taher, Commercial Director, visited GEZE to meet with Martin Palmer, Managing Director of GEZE, and Toufic Khachan, Operations Director of GEZE ME.

GEZE is a pioneer and major player with a long history of automation in architectural buildings such as entrance doors, door closers, window and skylight systems. The discussions focused on expanding business relations at both local and international levels.

This collaboration strengthens the relationship between both companies, encouraging deeper engagement through innovative products, system solutions, and services.

The meeting also laid the foundation for future projects, ensuring a long-term strategic partnership that benefits both parties

Moving forward, both companies expressed their commitment to leveraging their expertise to drive innovation and foster mutual growth in the aluminum and automation sectors.

# Olivz by Danube: A Landmark Project Showcasing Gulf Extrusions' Aluminum Innovation and Expertise



## **Olivz by Danube**

Gulf Extrusions completed the prestigious Olivz by Danube, a breathtaking showcase of architectural excellence and the unrivalled aluminum expertise of Gulf Extrusions.



**Extrusions Supplied By:** Gulf Extrusions

**Project Name:** Olivz by Danube

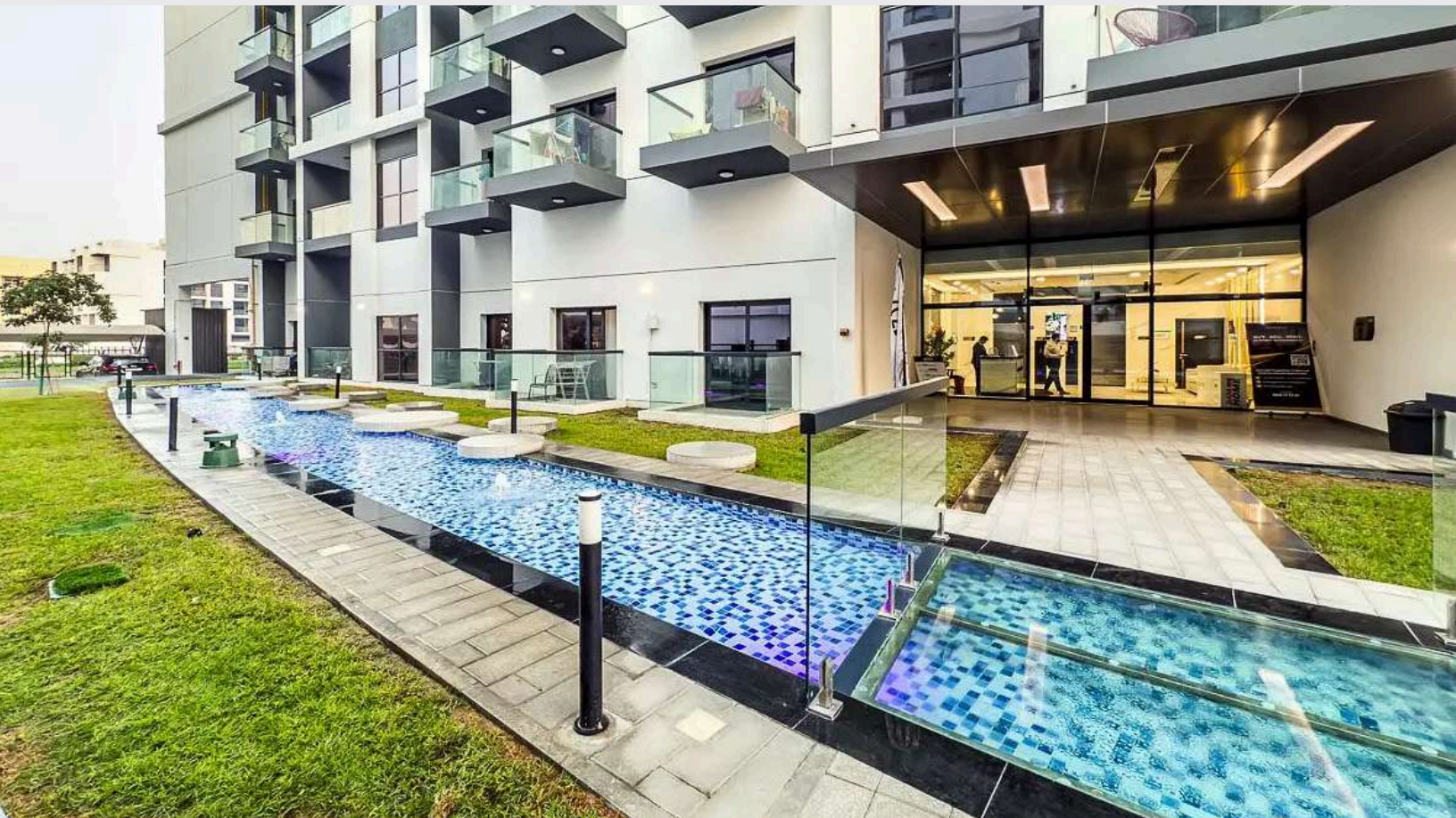
**Consultant:** NEB

**Contractor:** Nantong Construction Group

**Sub Contractor:** Al Qasim Aluminum

**Location:** Al Warsan - Dubai

**Product Name:** Curtain wall 50 and Montana System



By leveraging Gulf Extrusions' expertise and high-quality extrusion products, curtain wall 50 system at Olivz by Danube sets a new standard in innovative design and showcases the integration of aluminium extrusions in large-scale architectural ventures.

# Curtain Wall-50

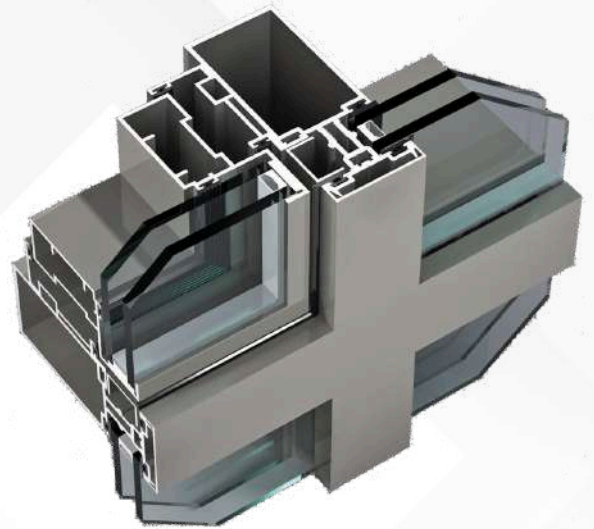
CW 50 is a unique curtain wall structure that combines multi-structural grid to create various aspects, starting by the conventional curtain wall system passing through the two way horizontal capping curtain wall systems to the four way structural curtain wall systems.

## Specifications:

- Features Glass - 6mm to 32mm
- Alloys - 6063 / 6060/ 6061 / 6082
- The System consists of 50mm width
- The System can provide the possibility of large glass panels.
- The System can be used for Two way, Four way & Conventional.
- Casements are Italian Openings.
- EPDM Gasket
- Finishes: Powder Coates / Anodizing

CW 50 MM has proven to be a curtain wall solution perfectly tailored to the Middle East market requirement.

- ✓ *The CW 50 system consists of 50mm width structure components allowing several external appearances.*
- ✓ *With the wide range of profile selection, the system accommodates large glass panels while ensuring the stiffness and rigidity of the curtain wall structure.*



**CW - 50**

For inquiries and orders, we invite you to connect with us at [sales@gulfex.com](mailto:sales@gulfex.com)



“ Encouraging healthier habits amongst our employees is one way in which we are building sustainability within our company. ”



d k h E r E  
 F  
 LR n M MPG

This comprehensive one-day campaign aims to create awareness about the importance of good vision focusing on prevention, early detection and timely access to treatment.

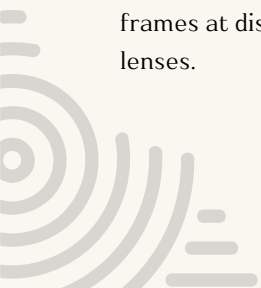
Through the campaign, employees at Gulf Extrusions had their eyes checked for early signs of eye problems such as glaucoma, cataracts, refractive errors including nearsightedness, farsightedness and retina examinations, and benefit from getting their eye test results right away.

Employees were also provided prescription glasses and frames at discounted prices with purchase of any type of lenses.



Eye care experts from Max Vision highlighted the importance of regular eye check-up and offered tips on care and protection of eyes. They also advised the employees about the special care required to keep their eyes healthy.

With the launch of the eye health awareness campaign focusing on the importance of getting regular eye tests to protect eyesight, detect eye problems early and maintain proper vision, Gulf Extrusions reconfirms its commitment to improving the lives of its employees, through several engaging initiatives that encourage them to adopt healthier lifestyle.





# Advancing Sustainability and Environmental Stewardship: Gulf Extrusions' Commitment to a Greener Future



The company's latest environmental and sustainability programs reflect its ongoing dedication to reducing its environmental footprint while enhancing its operational efficiency.

In a significant step toward a circular economy, Gulf Extrusions has partnered with a leading UAE-based recycling company to recycle aluminium hydroxide sludge and powder waste into valuable products.

Gulf Extrusion generates aluminium hydroxide sludge as a result of treating the water from the surface treatment plants (anodizing and powder coating). The traditional disposal method for this solid waste is landfill; however, it is now being utilized as a raw material in the cement industry, which will help reduce CO<sub>2</sub> emissions.

“Gulf Extrusions has long been at the forefront of sustainability, consistently implementing innovative initiatives that align with global environmental goals and showcase the company's commitment to building a sustainable future.”

## Initiative: Recycling of Aluminium Hydroxide Sludge and Powder Waste



Waste Generation			
Waste Type	Quantity Generated per Year in KG	Traditional Disposal Method	Alternative
Aluminium Hydroxide Sludge	1,124,680	Landfill	Used as raw material in cement industry
Polyester Powder Waste	77,840	Landfill	Used as a solid fuel in cement industry

Environmental Impact			
Waste Type	Quantity Generated per Year in KG	Conversion to Raw Material or Fuel in (KG) to be Used in Cement Industry	Reduction in KG CO <sub>2</sub> eq emissions
Aluminium Hydroxide Sludge	1,124,680	1,200,000	33,450
Polyester Powder Waste	77,840	115,000	

Additionally, Gulf Extrusion produces polyester powder waste from the powder coating process. Traditionally, this waste was disposed of in landfills, but it is now being used as a solid fuel in the cement industry, contributing to a reduction in CO<sub>2</sub> emissions.

Furthermore, by substituting traditional fuels or materials with recycled options, the company is helping to reduce carbon emissions associated with cement production. This supports global goals to mitigate climate change and reduce carbon footprints.

# Gulf Extrusions

Magazine

January 2025

Issue 30

الخليج للسحب  
Gulf Extrusions



GULF EXTRUSIONS LLC | A SUBSIDIARY OF SAIF AL GHURAIR GROUP LLC



GULF EXTRUSIONS LLC, PO BOX 5598, DUBAI, UNITED ARAB EMIRATES

TEL: 00971 4 884 6146

FAX: 00971 4 884 6830

WWW.GULFEX.COM